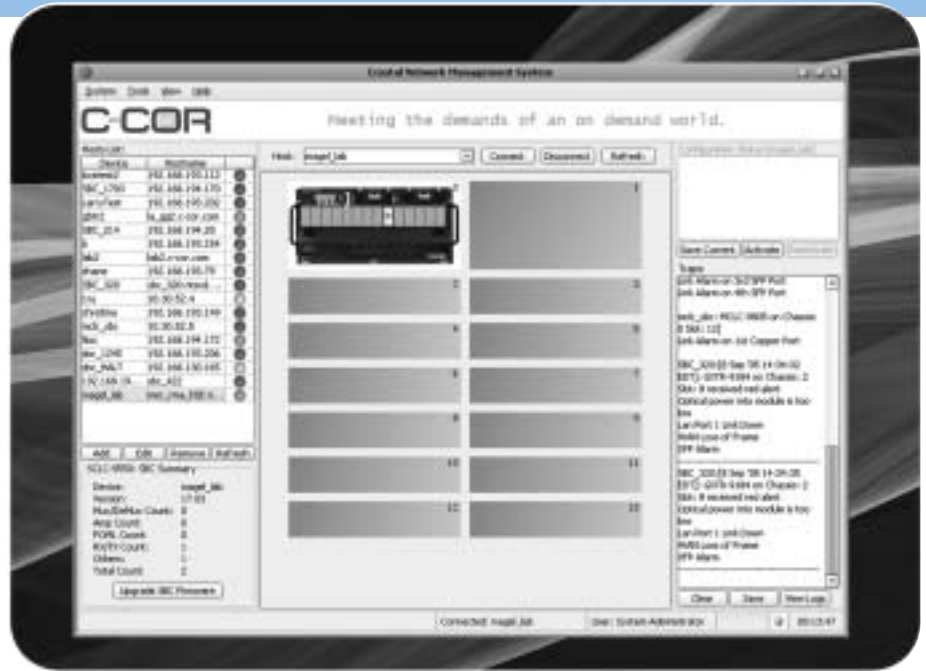


CRYSTAL Software

PLEXiS Management System



- **Monitors and controls all PLEXiS MFX and 1RU systems**
- **SNMP-based**
- **Auto-discovery of system modules**
- **Enable firmware upgrades to remote controller modules and line cards**
- **Integrates into the CORview Network Manager**

By providing monitoring and control for PLEXiS transport systems, the CRYSTAL Management System is a vital component of C-COR's Advanced DWDM Optical Networking Solution. CRYSTAL's primary responsibility is to collect and display all network, chassis, and line card performance statistics and alarm status. However, CRYSTAL actually enables much more than typical platform management systems. Specifically, the CRYSTAL Management System enables operators to provision the bandwidth and capacity of their DWDM optical network. This level of true service-driven management is key as optical networks evolve in scope from local to regional to national.

Available as either a stand-alone application or client-server based system, the CRYSTAL Management System utilizes the SNMP information provided by PLEXiS MFX chassis control modules and the controllers in PLEXiS 1RU units. The user-friendly graphical interface provides both high-level network views as well as more detailed screens for monitoring and managing specific network elements. Additionally, as part of the CORview suite of management systems, CRYSTAL integrates into the CORview Network Manager, enabling true network management of PLEXiS systems together with C-COR's MPS (Multi-Service Packet Switch) System.

Features

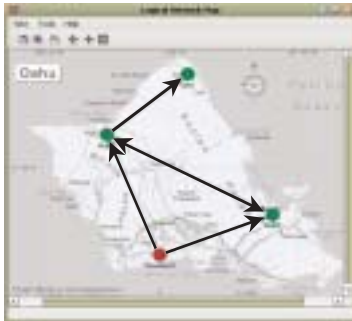
- Provides overview of network health and capacity
- View wavelength/bandwidth utilization and link status
- Remote firmware upgrades to controller modules and line cards
- Auto discovery of logical network links
- Gigabit Ethernet (GigE) remote monitoring (RMON) capabilities



The CRYSTAL GUI is intuitive and easy to navigate, displaying all of the line cards in each chassis.



Each line card can be controlled via the GUI interface, with performance parameters and alarm limits defined by the user.



Network monitor and control spans from the component level to the system level. The entire network can be navigated seamlessly with the click of a mouse button.

Ordering Information

Part Number	Description
SEMS-9580-00-00	CRYSTAL software (CD-ROM)
SEMS-9575-01-00	CRYSTAL annual license and maintenance
SERV-9585-00-00	CRYSTAL server (Note)

Note: Dell PowerEdge 750, 2.8GHz, 1 MB Cache, P4, 880FSB with Windows 2003 Web Server operating system.

Americas Headquarters

60 Decibel Road • State College • Pennsylvania • 16801 • USA
 T: 1-814-238-2461 T: 1-800-233-2267 F: 1-814-238-4065

EuroPacific Headquarters

Transistorstraat 44-V • 1322 CG Almere • The Netherlands
 T: 31-36-546 1111 F: 31-36-536 4255

PLEXiS is a trademark and the C-COR logo is a registered trademark of C-COR Incorporated.
 Copyright © 2006 C-COR Incorporated. All rights reserved.



www.c-cor.com

